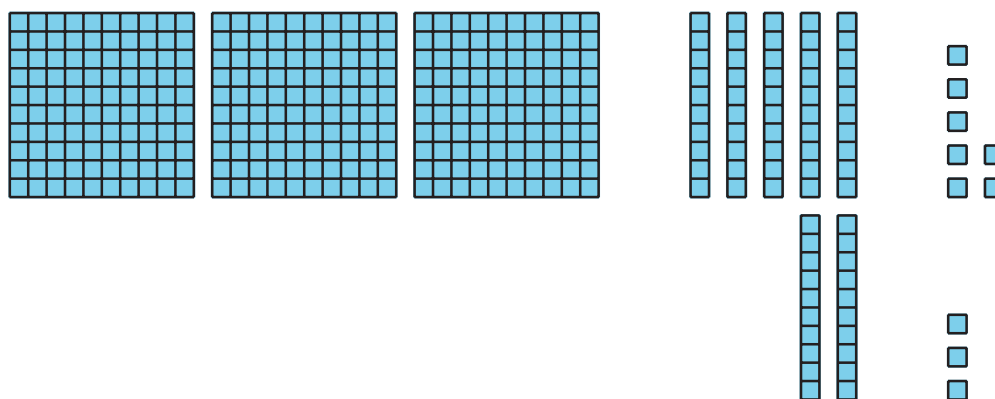
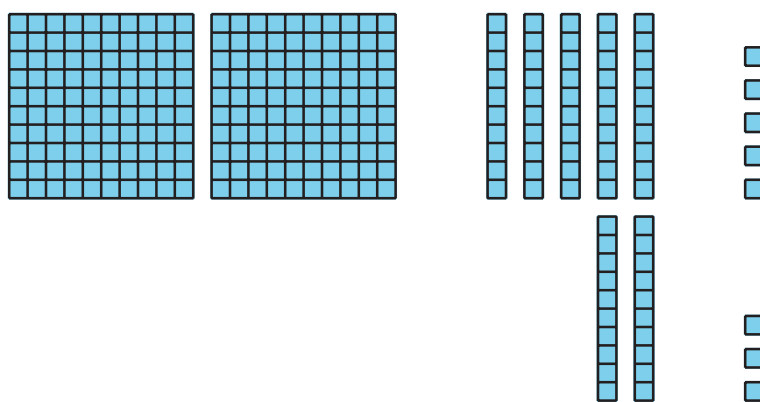


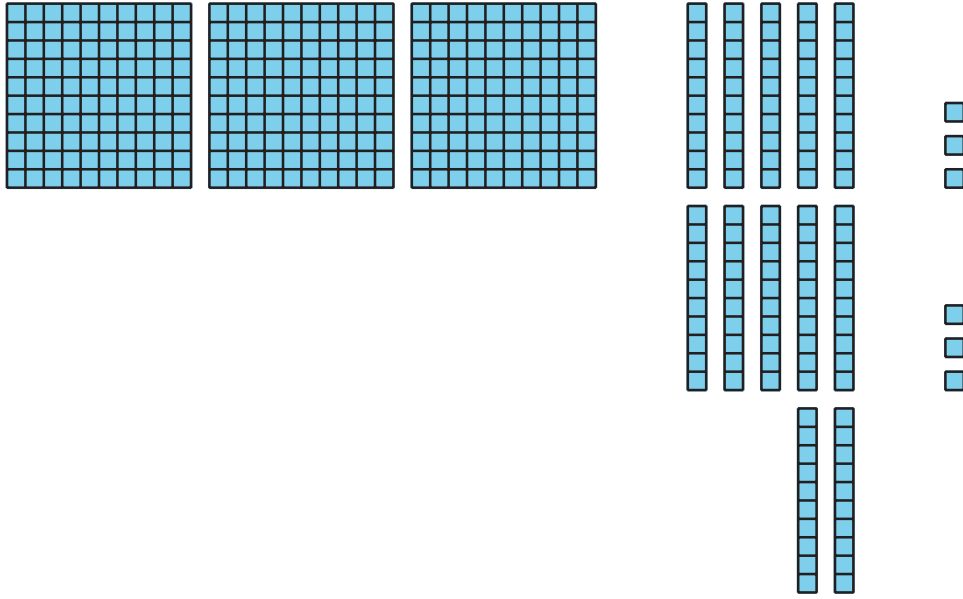
Lesson 8: Compose Tens and Hundreds to Add

- Let's compose tens and hundreds to add.

Warm-up: How Many Do You See: Too Many Tens

How many do you see? How do you see them?





8.1: Compare the Sums

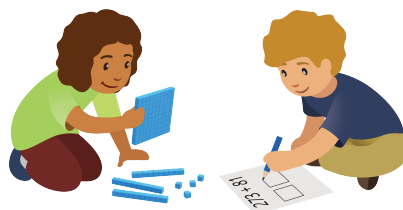
Find the value of each sum. Show your thinking. Use base-ten blocks if it helps.

$$1. 273 + 18$$

$$2. 273 + 81$$

$$3.273 + 88$$

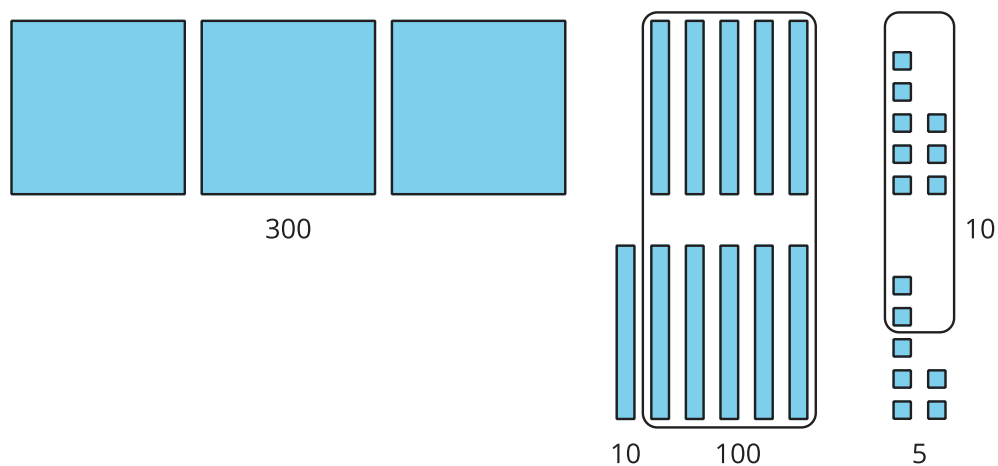
4. What was the same and different about the sums?



8.2: Different Ways to Show Your Thinking

1. Priya and Lin were asked to find the value of $358 + 67$.

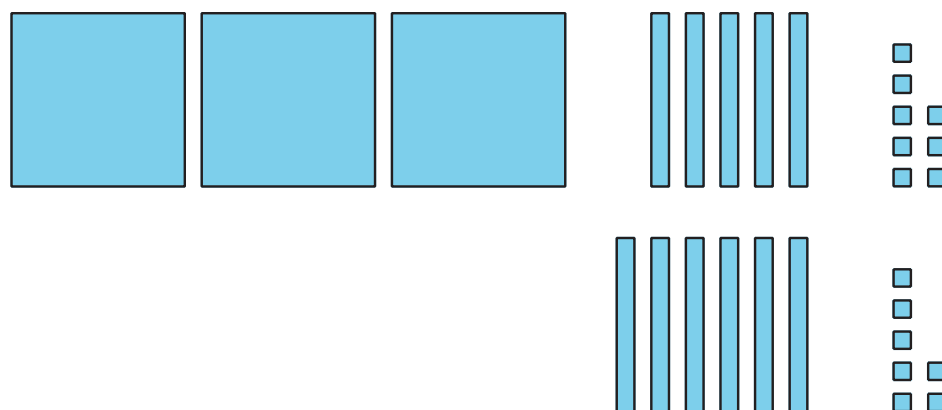
Priya's work



$$300 + 100 + 10 + 10 + 5$$

$$400 + 20 + 5 = 425$$

Lin's work



$$\begin{aligned}
 &3 \text{ hundreds} + 11 \text{ tens} + 15 \text{ ones} \\
 &11 \text{ tens} = 110 \\
 &15 \text{ ones} = 15 \\
 &300 + 110 + 15 = 425
 \end{aligned}$$

What do you notice about their work? What is the same and different about their representations? Be prepared to explain your thinking.

2. Find the value of $546 + 86$.

Show your thinking. Use base-ten blocks if it helps.