

Translating a Line

$$y = \frac{3}{2} + 2x$$

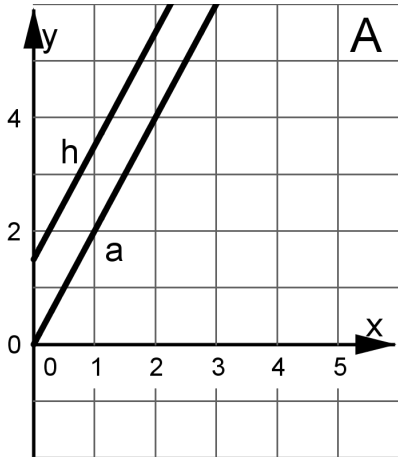
Translating a Line

$$2x - 3 = y$$

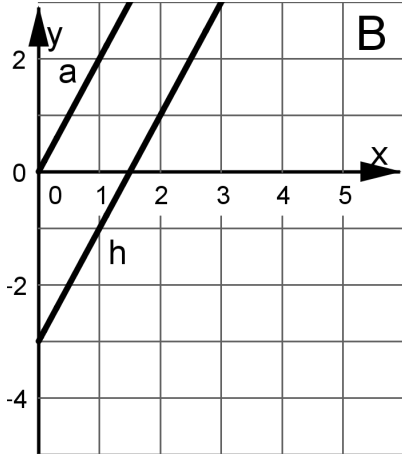
Translating a Line

$$y = \frac{1}{3}x + 1$$

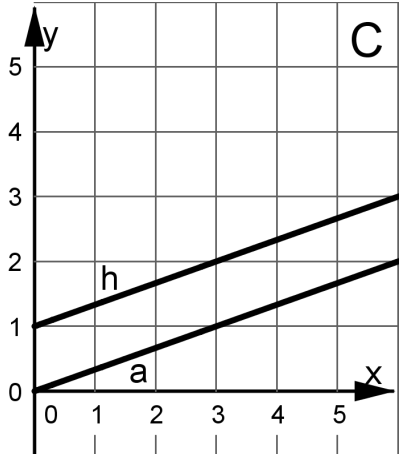
Translating a Line



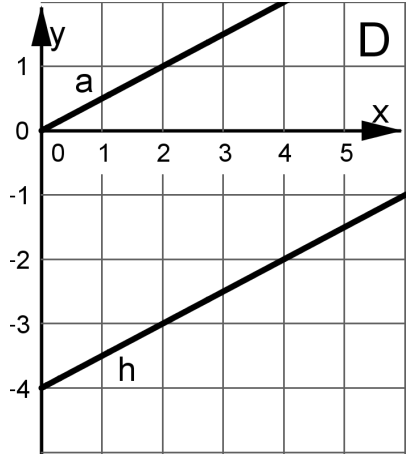
Translating a Line



Translating a Line



Translating a Line



Translating a Line

x	y
0	1.5
1	3.5
1.5	4.5
2.75	7

Translating a Line

The y -coordinate is three less than double the x -coordinate.

Translating a Line

The y -coordinate is one more than a third of the x -coordinate.

Translating a Line

x	y
0	-4
2	-3
4	-2
8	0