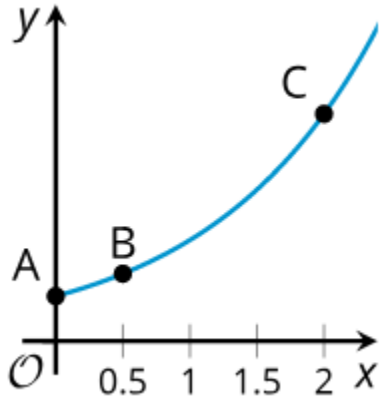


Info Gap: Two Points

Problem Card 1

Here is a graph of an exponential function f .

Find an equation defining f .

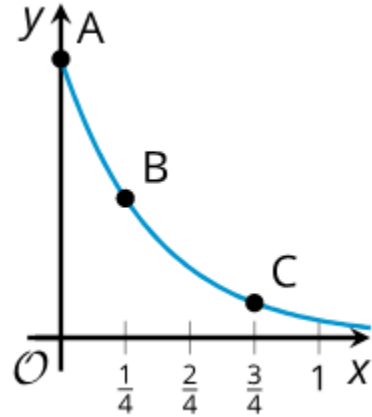


Info Gap: Two points

Problem Card 2

Here is a graph of an exponential function g .

Find an equation defining g .



Info Gap: Two Points

Data Card 1

- The y -intercept is 200.
- The y -coordinate of B is 300.
- The y -coordinate of C is 1,012.5.
- The rate of increase from 0 to 1.5 is 337.5%.

Info Gap: Two Points

Data Card 2

- The y -intercept is 100.
- The y -coordinate of B is 50.
- The y -coordinate of C is 12.5.
- The rate of decrease from 0 to 0.5 is 75%.